

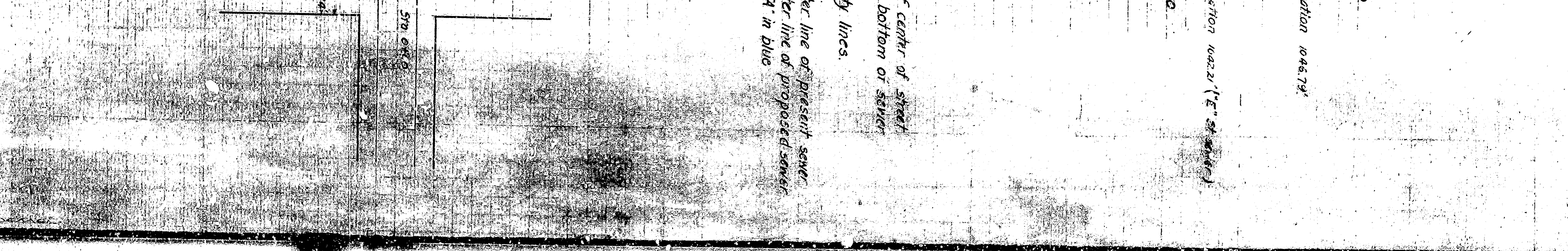
No. 114  
 PLAN AND PROFILE  
 OF  
 PROPOSED COURT STREET SEWER

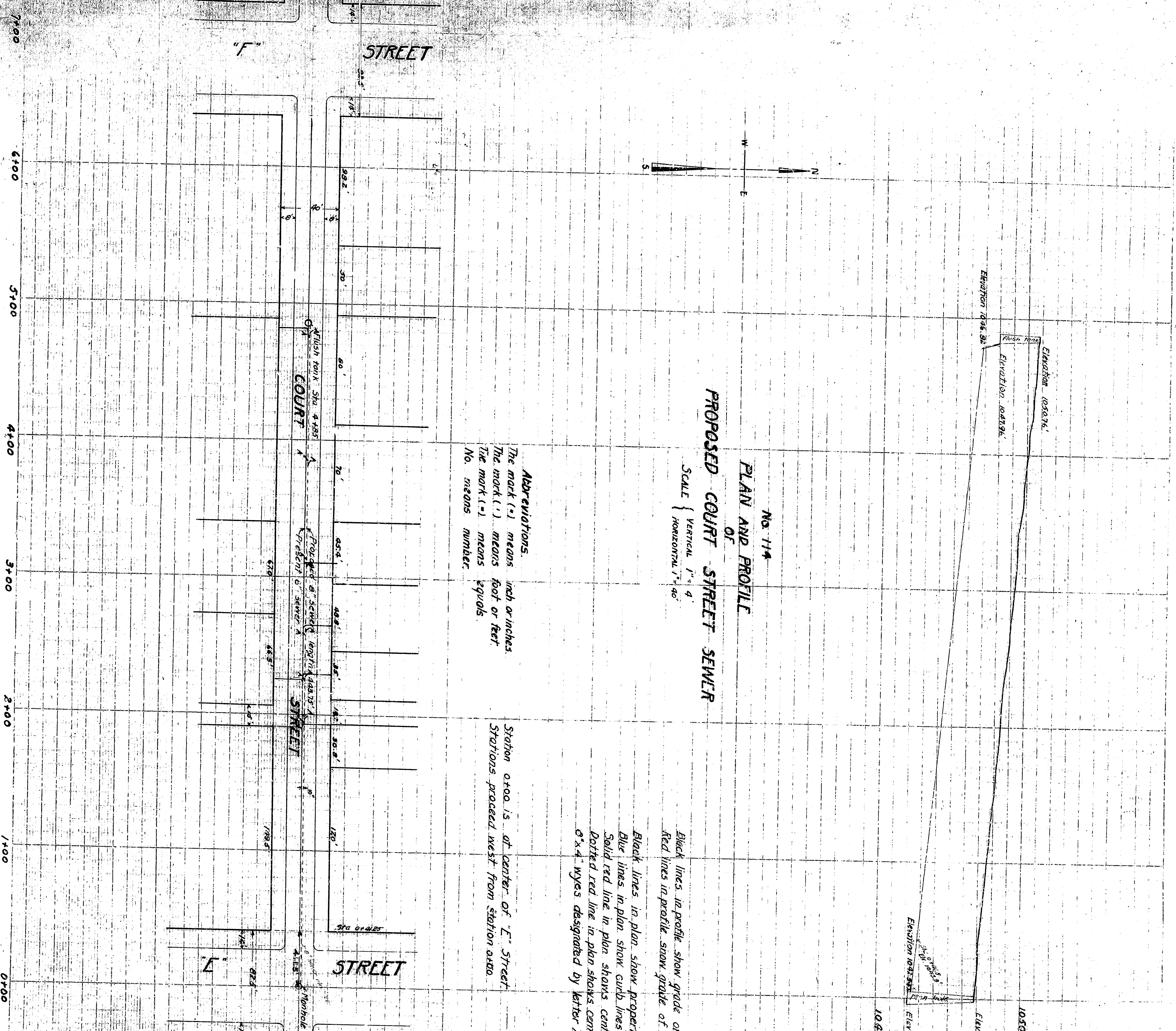
SCALE { VERTICAL 1" = 4'  
 HORIZONTAL 1" = 40'

**Abbreviations.**  
 The mark (+) means inch or inches.  
 The mark (') means foot or feet.  
 The mark (") means yards.  
 No. means number.

Station 0+00 is at center of "E" Street.  
 Stations preceded next from station 0+00.

Black lines in profile show property lines.  
 Blue lines in plan show curb lines.  
 Solid red line in plan shows center line of proposed sewer.  
 Dotted red line in plan shows center line of proposed sewer.  
 6" x 4" wyes designated by letter "A" in blue.





No. 114  
 PLAN AND PROFILE  
 OF  
 PROPOSED COURT STREET SEWER

SCALE { VERTICAL 1" = 4'  
 HORIZONTAL 1" = 40'

**ABBREVIATIONS.**  
 The mark (+) means inch or inches.  
 The mark (') means foot or feet.  
 The mark (") means yard.  
 No. means number.

Station 0+00 is at center of "E" Street.  
 Stations preceded next from station 0+00.

Black lines in profile show property lines.  
 Blue lines in plan show curb lines.  
 Solid red line in plan shows center line of proposed sewer.  
 Dashed red line in plan shows center line of proposed sewer.  
 6" x 4" wyes designated by letter "A" in blue.

7+00 6+00 5+00 4+00 3+00 2+00 1+00 0+00

"F" STREET

"E" STREET

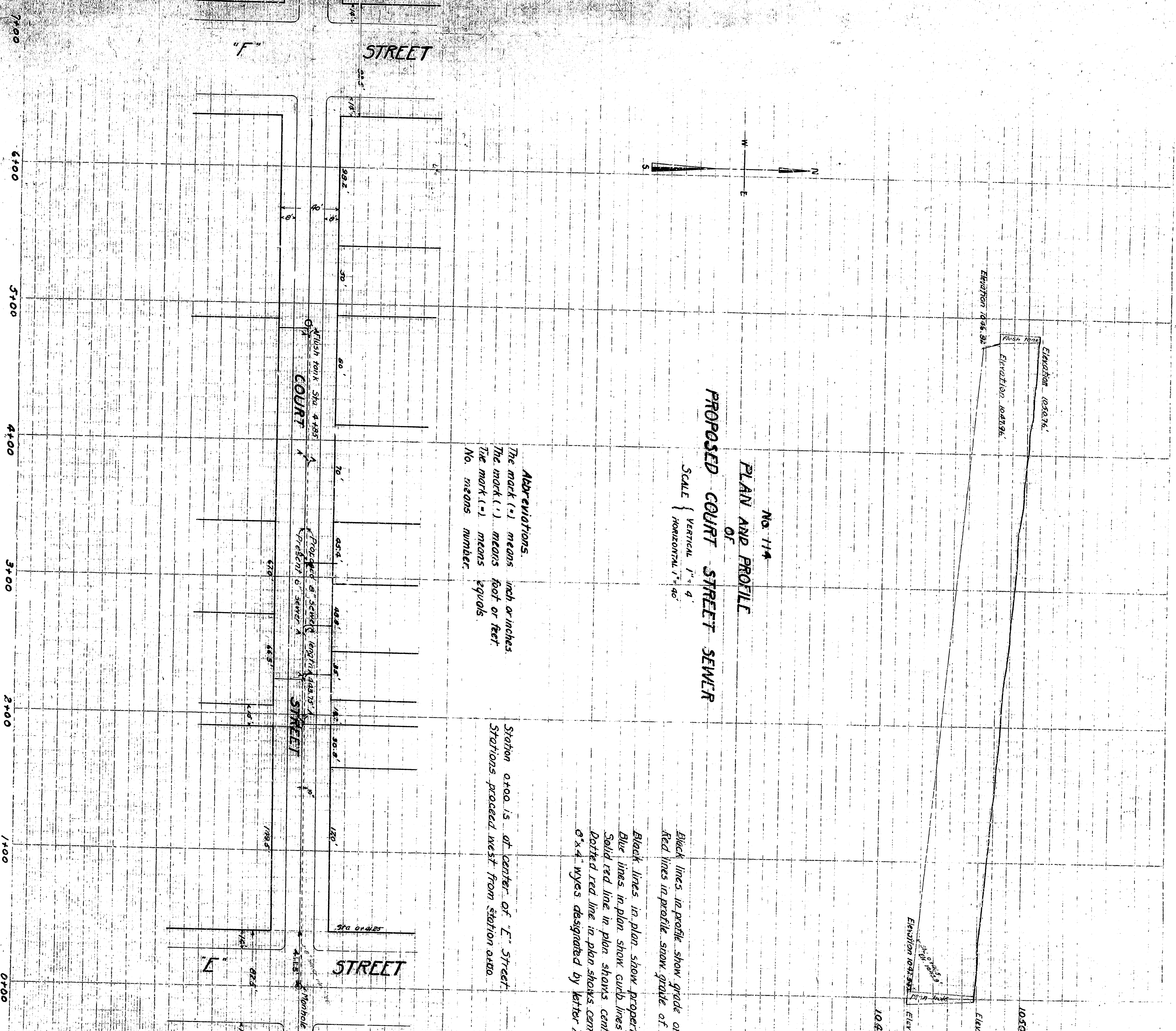
COURT

SEWER

SEWER

Vertical Curve

Scale



No. 114  
**PLAN AND PROFILE**  
**OF**  
**PROPOSED COURT STREET SEWER**

SCALE { VERTICAL 1" = 4'  
 HORIZONTAL 1" = 40'

**Abbreviations.**  
 The mark (+) means inch or inches.  
 The mark (') means foot or feet.  
 The mark (") means yards.  
 No. means number.

Station 0+00 is at center of "E" Street.  
 Stations preceded next from station 0+00.

Black lines in profile show property lines.  
 Blue lines in plan show curb lines.  
 Solid red line in plan shows center line of proposed sewer.  
 Dotted red line in plan shows center line of proposed sewer.  
 6"x4" wyes designated by letter "A" in blue.

Vertical curve data:  
 Elevation 10.30  
 Elevation 10.45  
 Elevation 10.50  
 Elevation 10.55  
 Elevation 10.60  
 Station 10+00  
 Station 10+40  
 Station 10+80